



# **A40 Over Bridge Refurbishment Communications toolkit**



Over Bridge was built in 1974 and carries the dual two-lane carriageway of the A40 across the River Severn at Over, Gloucester.

# A40 Over Deck Refurbishment Overview



## Background:

- Carries the A40 over the River Severn at Over in Gloucester
- 5,000 vehicles an hour crossing the bridge at peak times
- Connects Gloucester, Cheltenham and Ross on Wye A40 connects England and Wales

## This work:

- Extend the life of the bridge
- Reduce the risk of unplanned closures for emergency maintenance work in the future
- Deliver a more resilient and reliable route

**Timeline:** June 2026 – March 2027

## Work will include:

- Repairs to concrete
- Renewing the waterproofing
- Improving drainage
- Resurfacing
- New bridge joints
- Upgraded street lighting
- New barriers
- New signage.

# Defect images



Spalling underneath the bridge



Waterproofing failure and damage to deck concrete.



East expansion joint, Westbound carriageway.

# Newsletter copy:

National Highways are undertaking essential works on the A40 between the Over and Highnam roundabouts. These repairs will extend the life of the bridge and reduce the risk of unplanned closures for emergency maintenance work in the future. The scheme will deliver a more resilient, safer and more reliable route for local communities, businesses and freight.

## What to expect

Between 29 June 2026 and March 2027 there will be a mixture of lane closures, contraflows and a reduced speed limit of 30mph. This approach ensures the vital route can remain open throughout most of the works whilst maintaining the safety of users and workers. There will also be some unavoidable overnight closures with a clearly marked diversion route. CCTV monitoring and a free recovery service will be provided for the duration of the works.

For full details of the closures please visit: <https://nationalhighways.co.uk/our-roads/south-west/a40-over-bridge-refurbishment/>

## Access for residents and businesses

Access for residents and businesses will be maintained throughout the project. However, right-turn movements will be temporarily restricted, requiring short diversions via the A40 Highnam and A40 Over roundabouts.

These works will result in disruption to journeys and may cause inconvenience for residents, businesses, and road users. Thank you to drivers for their patience and understanding during these essential safety works. National Highways recommend that drivers plan their journeys in advance and use alternative routes where possible, especially during peak periods.

## More travel information

To keep up to date with National Highways work in the South West, please visit: <https://nationalhighways.co.uk/our-roads/south-west/> or follow them on X at [@HighwaysSWEST](https://twitter.com/HighwaysSWEST)

You can also check out [daily closures page](#) and [sign up for information about planned works](#).

## Any questions?

If you have any queries or comments about the work, or would like further information, please contact National Highways Customer Contact Centre on 0300 123 5000 or by email: [info@nationalhighways.co.uk](mailto:info@nationalhighways.co.uk)

# Social media post:

## 🚧 A40 essential bridge works 🚧

National Highways will be carrying out essential repairs on the A40 between Over and Highnam roundabouts from 29 June 2026 to March 2027. These works will help extend the life of the bridge and reduce the risk of unplanned closures in the future, making the route safer and more reliable for everyone.

What this means for road users:

- Lane closures, contraflows and a 30mph speed limit will be in place for most of the works
- The road will remain open wherever possible, but there will be some overnight closures with signed diversion routes
- CCTV monitoring and free recovery will be available during the works

Access:

- Access to homes and businesses will be maintained
- Some right turns will be restricted, with short diversions via Over and Highnam roundabouts

Please allow extra time for journeys and consider alternative routes, especially at busy times.

Thank you for your patience while this important work is carried out.

🔗 Find out more: <https://nationalhighways.co.uk/our-roads/south-west/a40-over-bridge-refurbishment/>

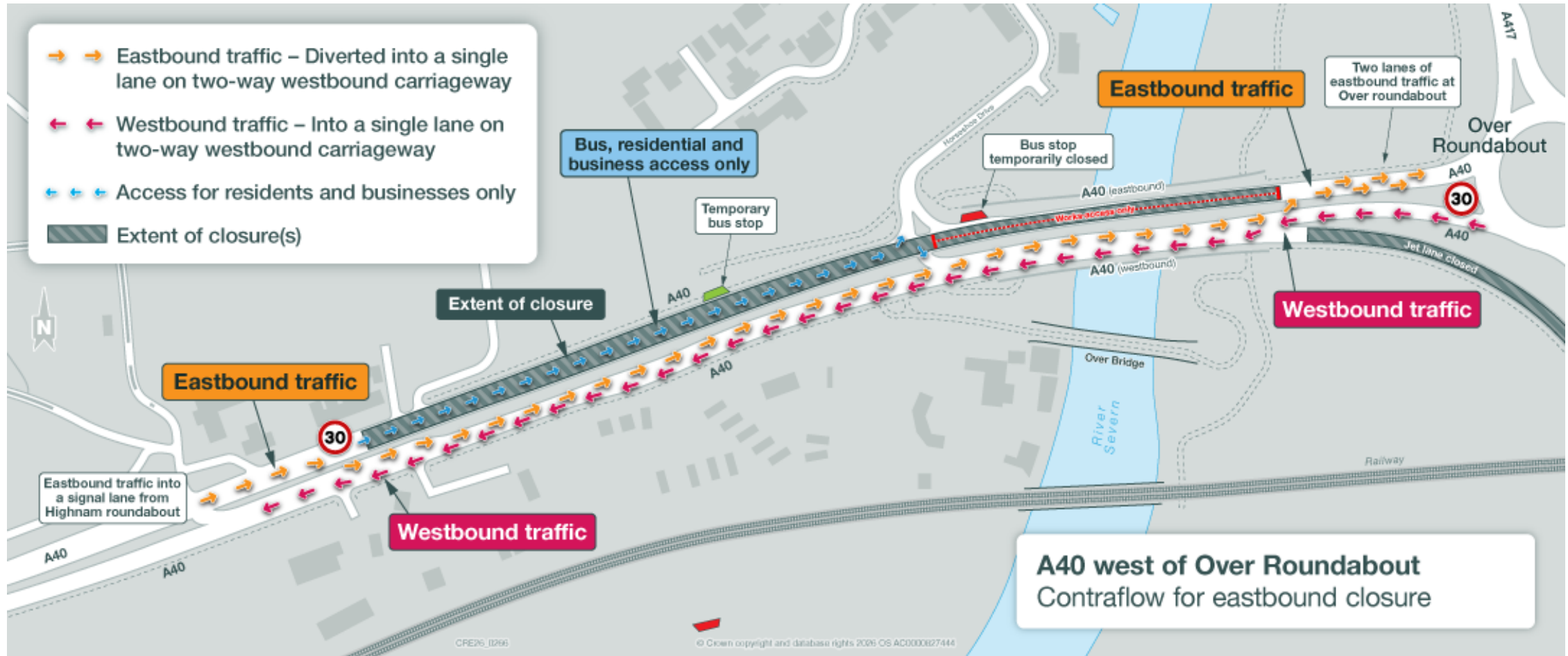
📍 Latest updates: <https://nationalhighways.co.uk/our-roads/south-west/>

📱 Follow: @HighwaysSWEST

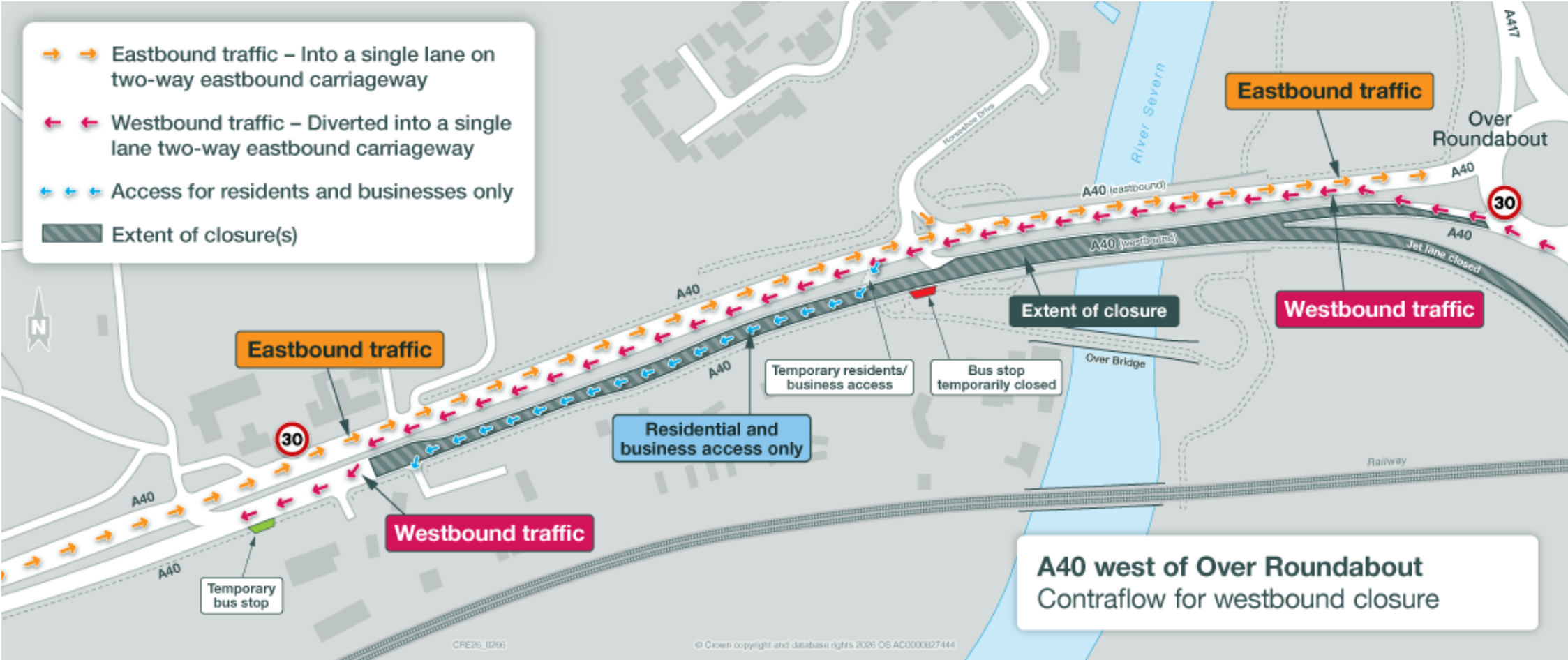
☎️ Questions? Contact National Highways on 0300 123 5000 or [info@nationalhighways.co.uk](mailto:info@nationalhighways.co.uk)



# Contraflow for eastbound closure



# Contraflow for westbound closure



# Bus Services

## **Bus lane availability:**

- During the contraflow for the Eastbound closure, the bus lane will be partially closed between the B4125 and Over Farm.
- During the contraflow for the Westbound closure, the bus lane will be open.

## **Temporary Bus Stops:**

- During the contraflow for the Eastbound closure, the bus stop will be temporarily relocated close to the entrance to the Toby Carvery (see graphic slide 8).
- During the contraflow for the Westbound closure, the bus lane will be temporarily relocated further west, opposite the entrance to Over Farm (see graphic slide 9).

## **Bus services:**

- During overnight closures, services that operate after 8pm will be affected. Please contact the bus service operator for the latest information on these services.

# Pedestrian and Cyclist Diversion Routes

Closure of A40 crossing point at Over Roundabout (shown in Red) for the duration of works

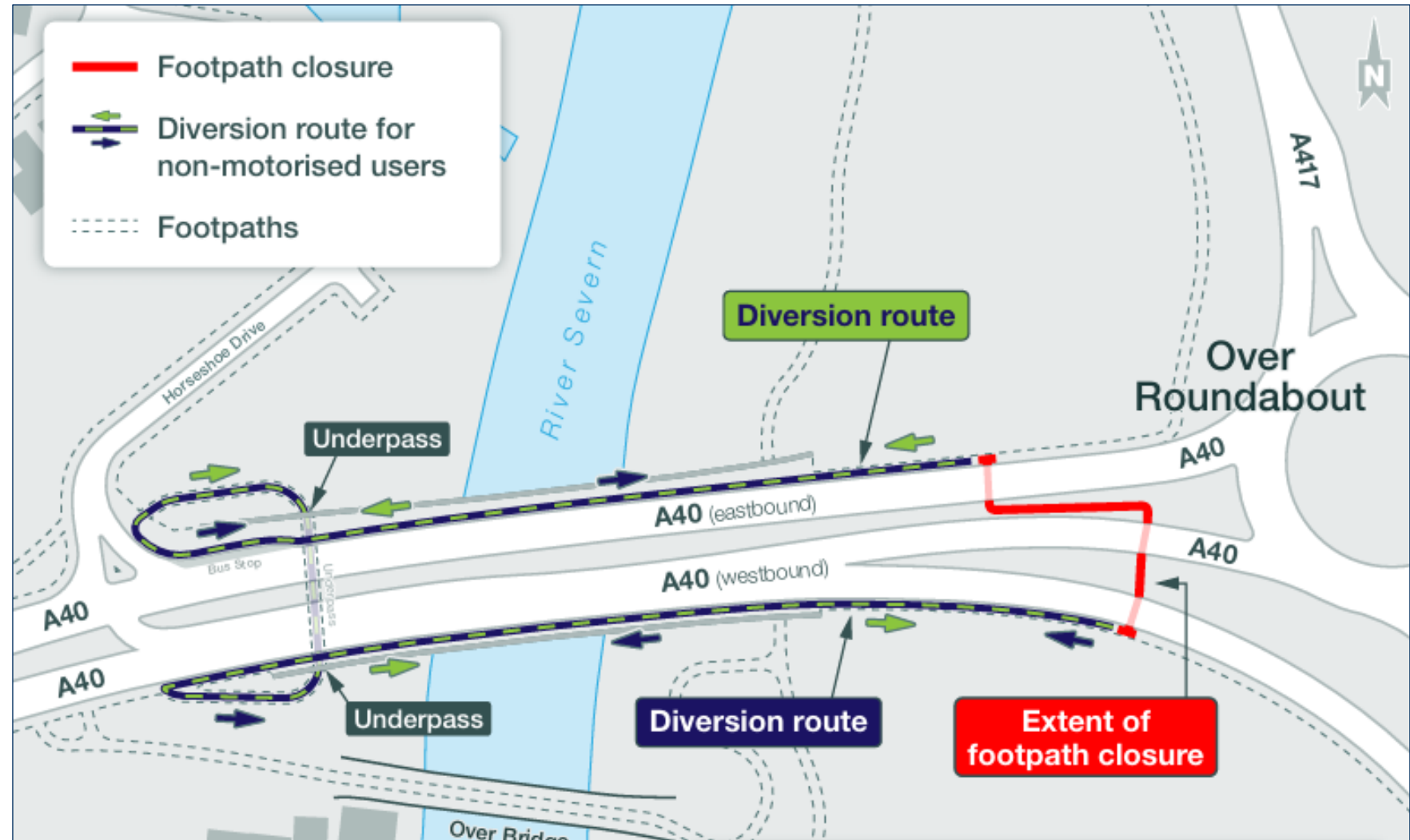
## Footway and Cycleway

The footway and cycleway will remain open for the duration of the works.

There will be local diversions for pedestrians and cyclists crossing the A40 on the bridge.

Cyclists will need to dismount in one area beneath the bridge, due to low headroom.

The footway on the A417 slip road will remain open, with safety fencing in place to keep pedestrians and cyclists separate from the work area.



# Contact details and further information:

## Contact us

[info@nationalhighways.co.uk](mailto:info@nationalhighways.co.uk)  
[0300 123 5000](tel:03001235000)

## X

[View X profile for - @HighwaysSWest](#)

## Facebook

[View Facebook page for - HighwaysSWest](#)

## Webpage

<https://nationalhighways.co.uk/our-roads/south-west/A40-Over-Bridge-refurbishment/>

Scan here to visit the  
A40 Over Bridge web  
page:

